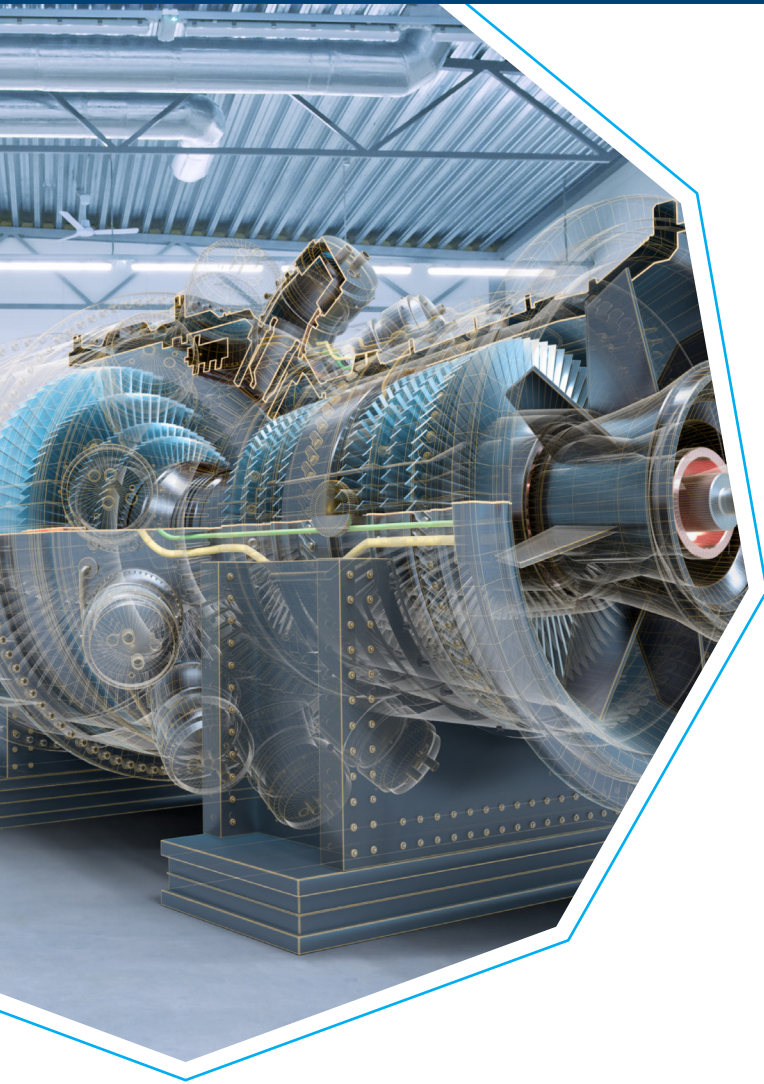


EXACTCAST™ KMV XL



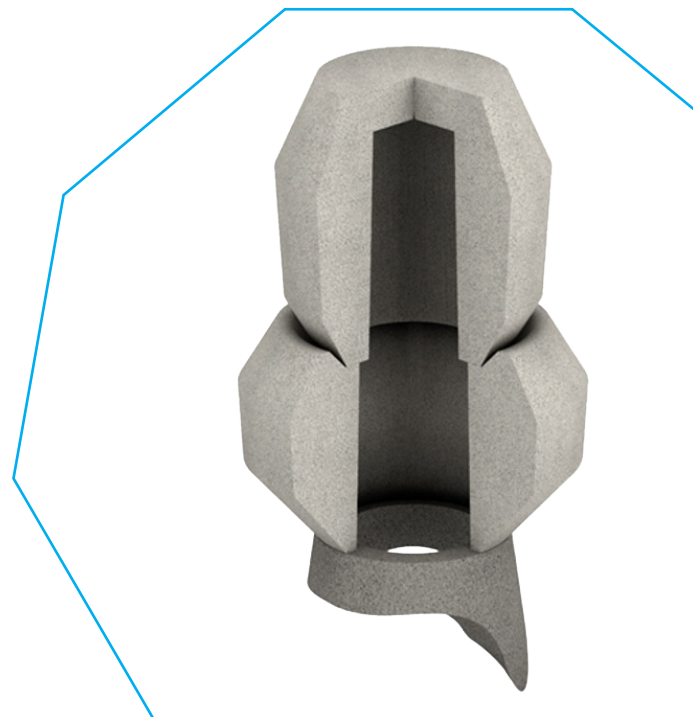
HIGHLY EXOTHERMIC AND INSULATING MINI RISER FOR LARGE CASTINGS

When making molds in large-scale casting, the mold must be precisely finished, despite or precisely because of its enormous size, and risers must be placed in the correct position. In the melting process, large-scale casting requires a lot of energy to melt the amount of metal. In quality assurance, defect mediation is crucial, because small defects in the solidification process of the metal can render the huge casting unusable.

Developed specifically for large castings, EXACTCAST™ KMV XL is a cold-box bonded mini-riser with highly exothermic and insulating properties. Thanks to the perfect balance between both properties, the riser provides the right performance during the solidification process of large steel or iron castings. EXACTCAST™ KMV XL risers are the premium solution for optimizing feeding systems that increase output in iron or steel casting applications. By using EXACTCAST™ KMV XL, the volume of a conventional feeding system can be reduced, thus the capacity of the foundry can be increased.

TECHNOLOGICAL ADVANTAGES

- Lighter and smaller compared to other feeding systems
 - Reduced volume by up to 50%
 - Increased capacity possible
 - Larger components castable
- Improved output
 - Lower melt requirement
- Excellent insulation with long solidification times
- Production of several or new castings possible
- Available fluorine-free



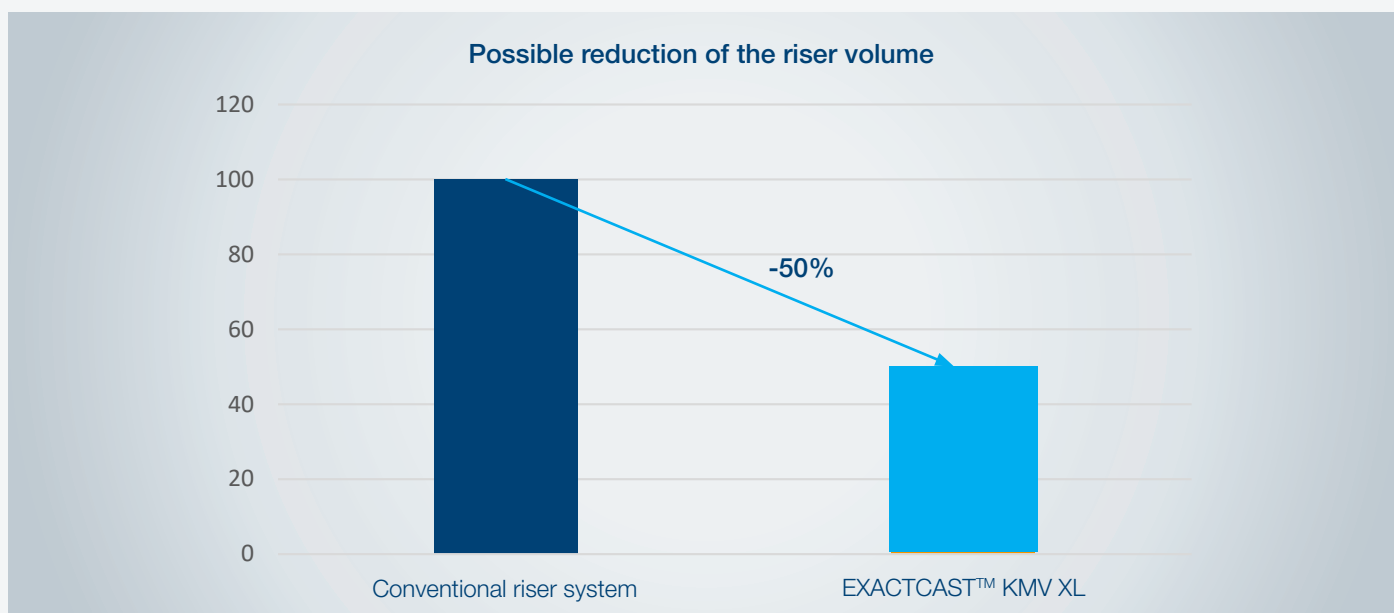


Figure 1: Comparison of riser volume reduction between a conventional riser system and EXACTCAST™ KMV XL

EXACTCAST™ KMV XL for large iron and steel castings

The EXACTCAST™ KMV XL product family has established itself as one of the most successful in the large foundry sector. Specially developed for large iron and steel components, EXACTCAST™ KMV XL risers are a milestone in innovative riser system design. With EXACTCAST™ KMV XL, the total costs of large foundries can be reduced and competitiveness significantly increased.

Balance between exothermic and insulating properties

This product's success is based on the right balance between the exothermic energy and the insulating properties. When using riser systems in large-scale casting, longer times for casting and filling as well as for solidification must be taken into account due to the sizes handled. EXACTCAST™ KMV XL risers deliver heat at the right moment and have good insulating properties to feed the casting during the solidification process. In addition, the high quality of the EXACTCAST™ KMV XL riser ensures that it withstands high temperatures over long filling times while retaining its original shape.

Riser volume cut in half

Many years of experience have shown that an EXACTCAST™ KMV XL riser with half the feeding volume can adequately and safely replace traditional fiber riser systems. This reduces the riser volume by up to 50%, which, in turn, leads to lower melting requirements and thus improved output.

In addition, the total volume of all selected EXACTCAST™ KMV XL risers should be at least 20% of the casting volume. This allows the production of multiple castings or new castings.

YOUR SUSTAINABILITYPLUS

Profitability

- Improved productivity
 - Improved output
 - Fewer casting defects with improved feeding characteristics
 - Tool compatibility
 - Less cleaning effort
- Cost savings
 - Lower melting requirement
 - Less energy

Environment & Social

- Available fluorine-free